

# LUXÉRISE HOME ELEVATOR – 2 FLOOR

*LuxéRise*, the epitome of luxury in home elevators. Your home is your sanctuary, and now it can be effortlessly glamorous.



## OVERVIEW

- Home elevator that is whisper quiet you won't even notice it
- UPS back up power to ensure safety during a power outage
- Only 1.5 Kw power rating during running (that's less than the microwave)
- Connects to standard house-hold power no extra requirement
- Fitted with emergency self-exist device
- Self lubricating system to reduce maintenance



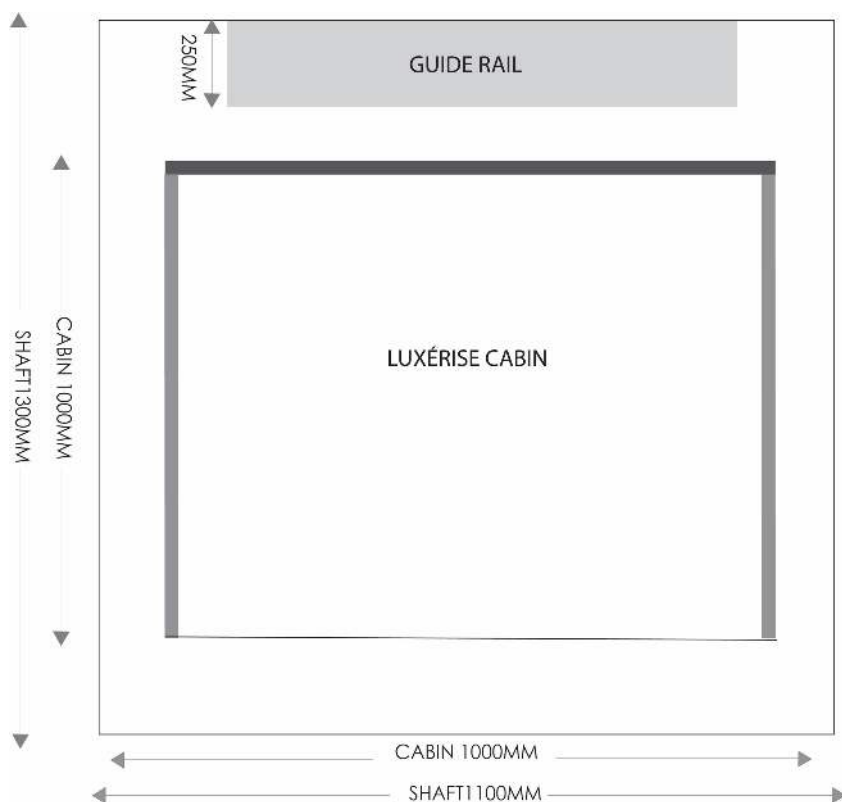
# ABOUT

## WHY CHOOSE LUXÉRISE

- 1. Elevate Your Lifestyle:** LuxéRise adds a touch of opulence to your residence, making every ascent and descent a statement.
- 2. Aesthetic Brilliance:** Our elevators are designed not just for function, but to be a stunning focal point in your luxurious space. With options like bright glass wells, they're a visual masterpiece.
- 3. Tailored to Impress:** Whether you have a circular wooden staircase or a lavish mansion, LuxéRise elevators can be customized to blend seamlessly with your existing architecture.
- 4. Sleek and Spacious:** LuxéRise offers ample room for 3-4 individuals, ensuring a comfortable and stylish journey between floors.
- 5. Versatility Defined:** Choose from 2-4 floor models to perfectly suit the layout of your home, enhancing its allure.
- 6. Space, Style, and Substance:** LuxéRise is engineered for efficiency, eliminating the need for a separate machine room while adding a touch of contemporary elegance.
- 7. Luxury Redefined:** Tailored for discerning homeowners with a penchant for the extraordinary, LuxéRise is a statement piece that transcends mere functionality.



# KEY DIMENSIONS



<b>DRIVE</b>	Roped Oil Hydraulic	<b>PIT</b>	100mm or No Pit
<b>CONTROL</b>	Automatic	<b>LOAD CAP</b>	400kg (4-5 people)
<b>POWER</b>	Single Phase 220V, 50HZ	<b>ENTRANCES</b>	Optional
<b>STOPS</b>	2	<b>TOP HEIGHT</b>	2400mm
<b>FLOORS</b>	2	<b>GUIDE RAIL (H x T x W)</b>	4800 X 250 X 850MM
<b>CABIN DIMS</b>	1000 X 1000 X 2100mm	<b>SHAFT DIMS</b>	1100 X 1350 X 4800MM
<b>SPEED</b>	0.30m/s		

All measurements are in mm  
H (height), T (thickness), W (Width)

## FEATURES & BENEFITS

<b>Affordable Elevation:</b>	Elevate your home with style and affordability. Our sleek elevator motor operates so quietly, it's as if it's whispering sweet nothings.
<b>Reliable Backup Power:</b>	When the city's power plays hard to get, our elevator comes to the rescue. Equipped with UPS backup power, ensuring you're never left hanging.
<b>Efficient Power Consumption:</b>	With a total rated power of just 1.5Kw, it's smaller than your favourite microwave oven. Energy-conscious and ready to impress.
<b>Weightless Wonder:</b>	Our specialized motor support means your building won't feel the weight of the elevator. It's a light and effortless affair.
<b>Flexible Design Options:</b>	Need a backpack or gantry structure? We've got you covered. Our elevator adapts to your desires, giving you the ultimate in personalised luxury
<b>Emergency Ready:</b>	Our direct external line connects you instantly to a rescuer in any emergency. You're never alone.
<b>Tailored Power Supply:</b>	Whether it's household power AC220V or a customised option, there's no need for extra power. It's a perfect fit every time.



# SAFETY FEATURES

Full height light ray infrared protection to the cabin opening	Independent emergency brakes that clamp the rails and catch the lift in the event of speeds exceeding 0.4m/s.
Emergency release for self-rescue, if required,	UPS battery back up supply in case of power failure.
Lockable key panels for child lock.	Battery backed-up light in cabin
Safety limited switches are located at each landing door, on the roof, in the pit and sensing over and under travel.	Electromagnetic lock protection to ensure the landing door is closed, and all safety features and engaged prior to elevator moving.
Assisted manual emergency device valve from pump station, so elevator can be overridden and lowered at anytime.	Compliant CE safety standards
Thermal overload and overload protection	Emergency stop button in cabin and controller box
Intelligent power sensor that senses main power outage and lowered elevator to the ground and unlocks the door. (using the battery back up)	Bottom sensor, detects if there are obstacles or passengers below the elevator and it stops working.



## KEY FUNCTIONS

### Oil Cylinder

The hydraulic cylinder is HS70-55, the hydraulic cylinder runs for than 300,000 times continuously, no oil leakage, no damage. The automatic throttle valve is installed at the oil outlet of the cylinder, to prevent the sudden burst of the oil pipe and play a throttling effect.

### Silent Pump Station

The silent pump station is controlled by the proportional valve, which can intelligently adjust the pressure of the oil cylinder. Compared with two speed valve, the operation is more stable. The hear pump station is adopted, the maximum pressure is greater than or equal to 30MPa, the pump station can be started continuously for no less than 500,000 times with low noise.

### Limited Switch

The elevator is equipped with three travel switch at the lowest, middle and highest points. When the elevator reaches the destination it will stop automatically.

### Light Curtain

Elevator light curtain is a light type safety protection devise. When the elevator is running, a dense infrared protection light curtain is formed. When any beam of light is blocked, the elevator will stop immediately.

### Explosion-Proof Oil Pipe

High pressure rupture-proof pipe allows the hydraulic oil to be smoothly transmitted from the pump station to the oil cylinder.

### Control Box

The main control board is highly integrated, which replaces a number of electrical parts, has a more stable operation, convenient installation and maintenance and reduces the failure rate.

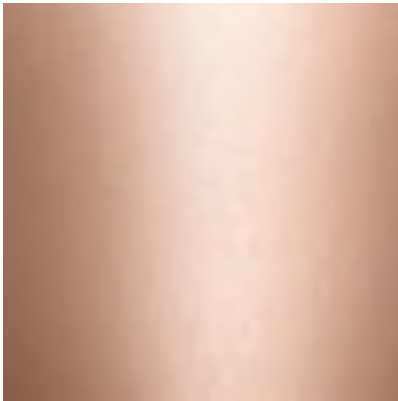
### Control Button

The button panel is novel and distinctive. It is rich in a contemporary sense, it accords with ergonomics principles and is easy to use.



## THE FINISHES OPTIONS

### Stainless Steel Cabin



Rose Gold



Silver Grey



Titanium Gold

### Cabin background pattern



N07 – Geometric



N05 – Wreath



N01 – Botanical



N10 – Crystal

### Ceiling



C02 – Star



C07 – Checkerboard



C08 – Grid



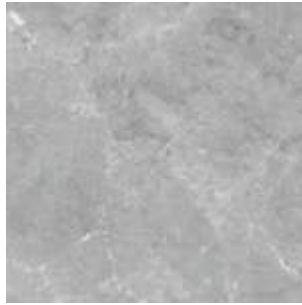
C06 – Petal

## THE FINISHES

### Floor



DB013 – Titanium Gold Marble



DB014 – Silver Grey Marble



F06 – Diamonds



F01 – Kaleidoscope



F09 – Whimsical

### Aluminum Alloy Frame for Glass Cabin and Cabin Door



A01 – Silver Alloy



A02 – Black Alloy



A05 – Woodgrain Alloy



A07 – Rose Alloy