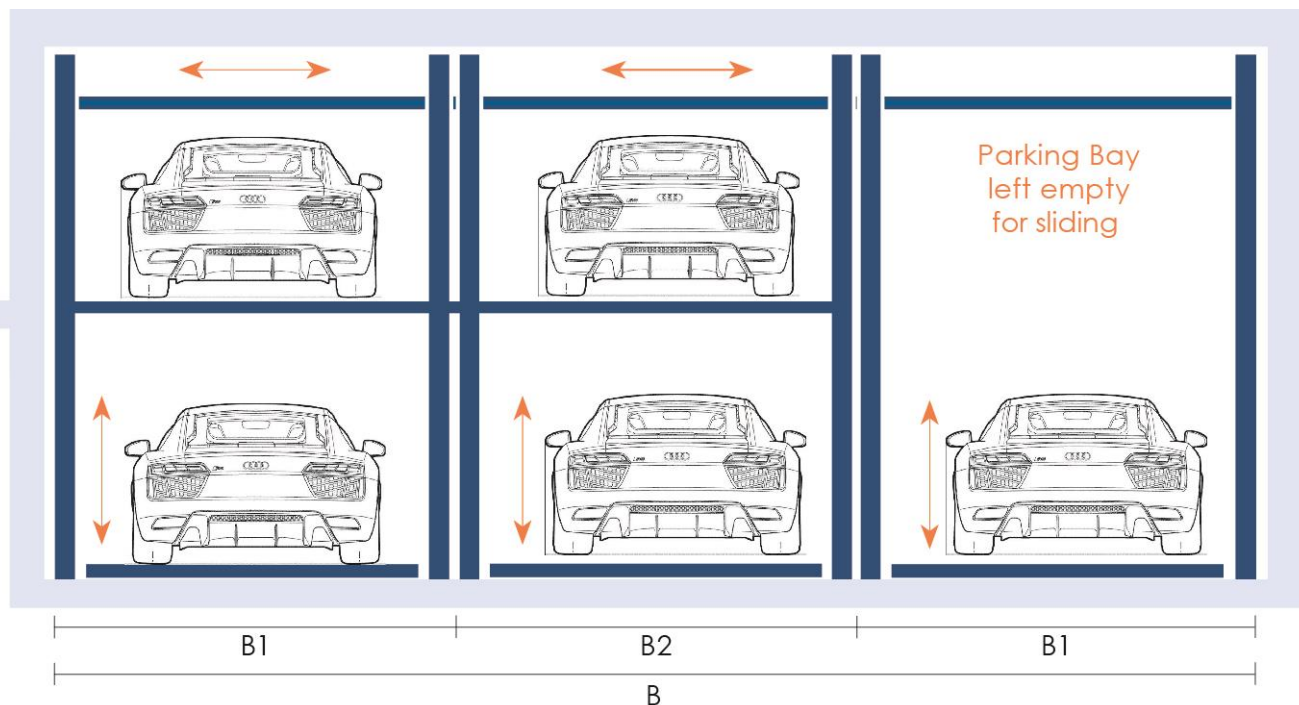


LUXÈPARK 2LP

Semi-automatic parking system with cantilever platforms for easy access



OVERVIEW

- The entrance level consists of sliding platforms with an empty space to enable the platform to manoeuvre left or right
- The lower level consists of the lifting platform. The lifting platform will lift into the empty space on the entrance level.
- The smallest system design is a 2 grid to provide 3 parking positions
- The system can be extended by adding additional grids. To minimise access time, it is recommended not to combine more than 10 grids for 19 parking positions with one common power unit.

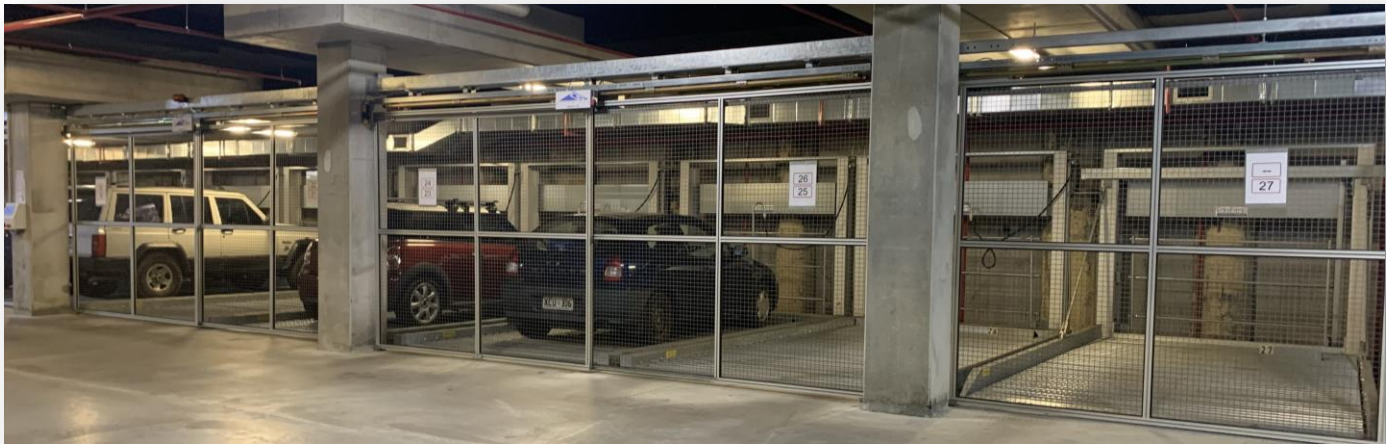
ABOUT

GENERAL DESCRIPTION

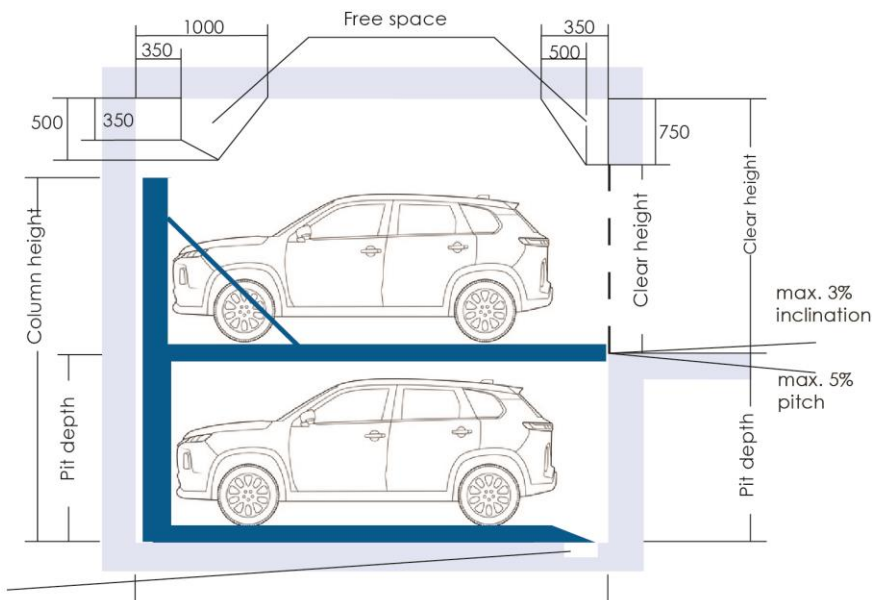
- Independent parking on 2 levels, with pit
- Lower level with lifting platforms.
- Entrance level with sliding platform and empty space
- Load capacity per parking position:
 - Standard 2000kg
 - upgradeable to 2300-2600kg

APPLICATION

- Multi-residential developments
- Townhouse developments
- Mixed use developments



KEY DIMENSIONS



Drainage channel 100 x 100 with collecting pit of 500 x 500 x 200. Inclination can be chosen from 2%

All measurements are in mm

REQUIREMENTS

Standard system length:

5550mm for vehicles with a maximum length of 5000mm and a maximum weight of 2000kg. Platforms for vehicles outside of this scope would need to be discussed with Car Stackers International.

Concrete Requirement:

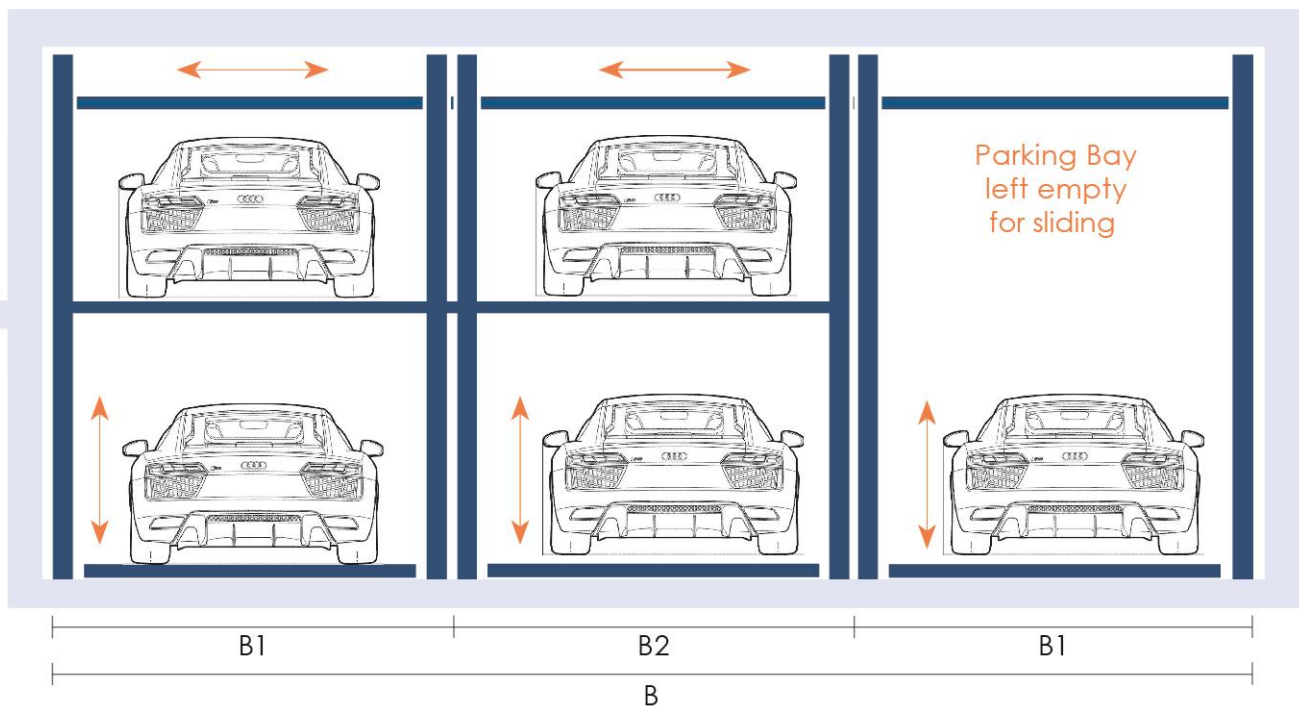
Minimum 18, C25, floor evenness acc. to DIN 18202 tab. 3, line 3.

Drainage:

100 x 100 with collecting pit 500 x 500 x 200. Inclination has to be a minimum of 2%

Pit Depth Front	Pit Depth Back	Column Height	Clear Height	Car Height (Below)	Car Height (Above)
1,750 or deeper	1,750	3,650	2,220	1,500	from 2,050
1,850 or deeper	1,850	3,850	2,220	1,600	from 2,050
2,000 or deeper	2,000	4,150	2,220	1,750	from 2,050
2,100 or deeper	2,100	4,350	2,300	1,850	from 2,150
2,200 or deeper	2,200	4,550	from 2,400	1,950	from 2,250
2,300 or deeper	2,300	4,750	from 2,500	2,050	from 2,350

MEASUREMENTS



EXAMPLE: 3 GRIDS FOR 5 PARKING POSITIONS

PLATFORM WIDTH	OUTER GRID B1	INNER GRID B2	TOTAL MEASUREMENTS FOR x GRIDS									
			2	3	4	5	6	7	8	9	10	
2,300	2,600	2,500	5,200	7,770	10,200	12,700	15,200	17,700	20,200	22,700	25,200	
2,350	2,650	2,550	5,300	7,850	10,400	12,950	15,500	18,050	20,600	23,150	25,700	
2,500	2,800	2,700	5,600	8,300	11,000	13,700	16,400	19,100	21,800	24,500	27,200	
2,600	2,900	2,800	5,800	8,600	11,400	14,200	17,000	19,800	22,600	25,400	28,200	
2,700	3,000	2,900	6,000	8,900	11,800	14,700	17,600	20,500	23,400	26,300	29,200	

Additional items to note:

Power requirements: Builder to provide a 3-phase isolator switch for every hydraulic pump

The power unit: Will be installed on the back wall between 2 system columns or a outside the system depending on your site.

Power unit's measurements: (LxWxH) 450 x 220 x 600 mm.

The Switch Cabinet Requirements: The switch cabinet (positioned outside the system)- 800 x 1000 x 800 mm, including cabinet doors' opening.

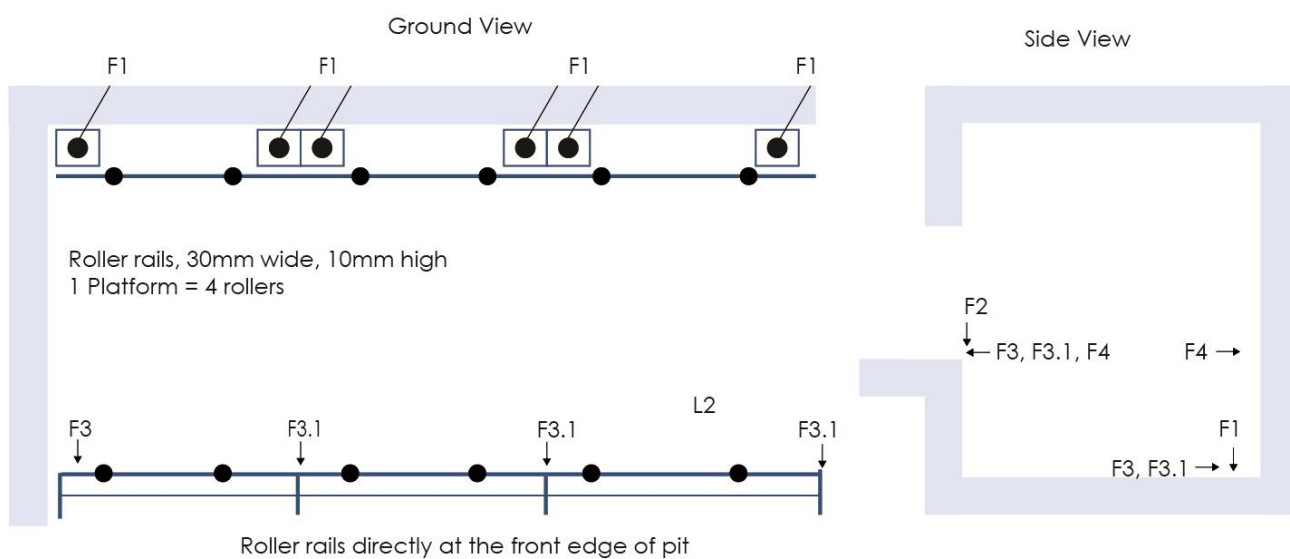
All measurements are in mm



Load Forces

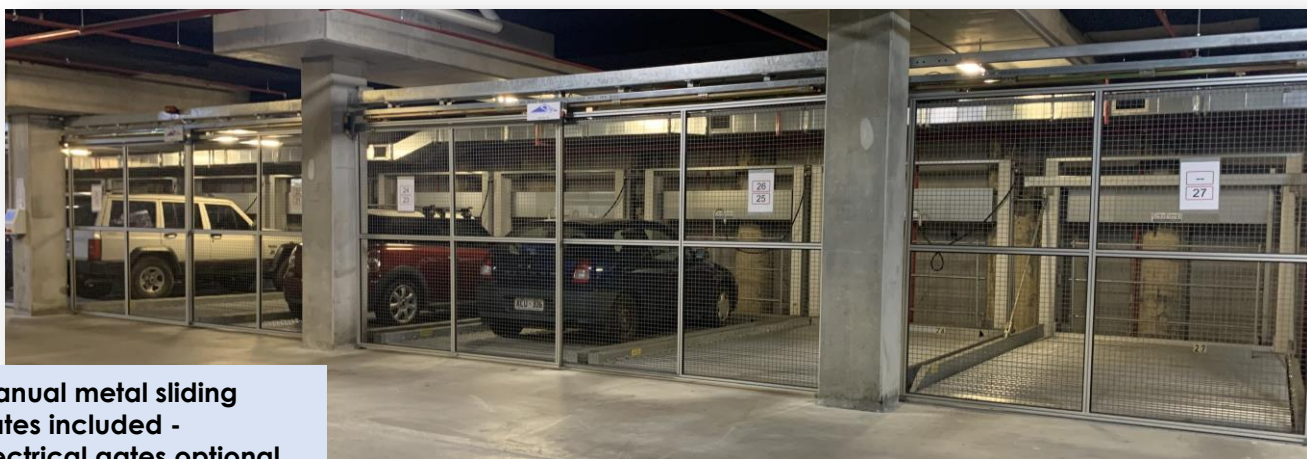
Foundation and pit walls must be planned so that they can absorb the loads of the parking system according to the schematic diagram shown on the right. If necessary, in case of heightened foundation requirements, the chemical anchors must be provided by the client. The borehole for the footplates of the parking system must be 180mm deep.

Foundation, walls and ceilings are the responsibility of the customer and must be completed prior to Car Stackers International beginning install. Area must be correct dimension, clean and dry. Concrete quality needs to be at least: C25/30.



LOAD PER PARKING SPACE	VERTICAL LOADS		HORIZONTAL LOADS		
	F1	F2	F3	F3.1	F4 (while driving)
2,000kg	18.1 kN	30.1 kN	30.1 kN	30.1 kN	8.1 kN
2,300kg	20.1 kN	32.1 kN	32.1 kN	32.1 kN	9.1 kN
2,600kg	23.1 kN	35.1 kN	35.1 kN	35.1 kN	10.1 kN

METAL GATES – for safety & comfort



**Manual metal sliding gates included -
Electrical gates optional**

Metal manual gates are included in delivery of your semi-automatic system. Alternatively, you can also choose other types of gate coverings.

For maximum user comfort when driving in and out of the system you can even choose electrical gates, which can be opened and closed by remote control from the vehicle.

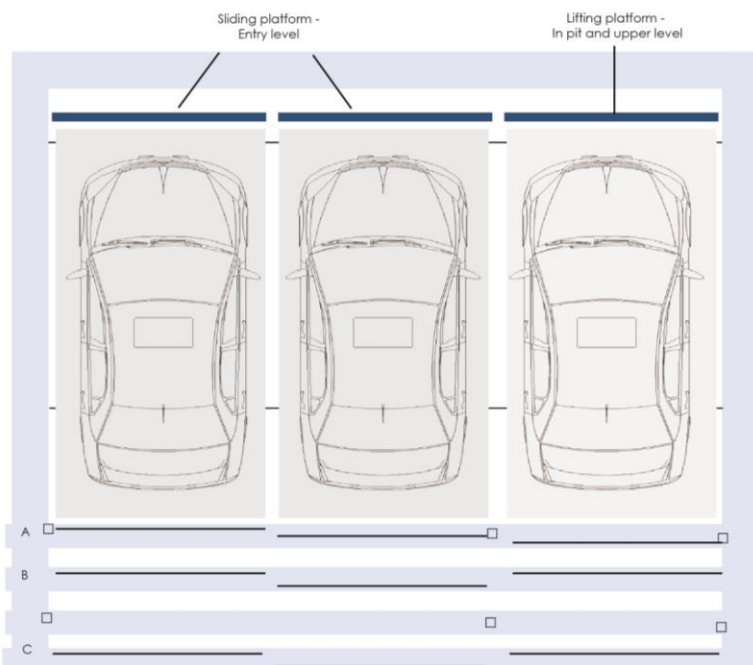
GATE POSITIONS

There are three options when positioning the sliding gates.

Option A: Sliding gates between columns. The columns must be positioned at least 2 grids apart.

Option B: Sliding gates behind the building columns. The gates and necessary system length must be 5450mm.

Option C: Sliding gates in front of the building columns.





OPTIONAL EXTRAS

- Aluminum premium floor coverings
- Catwalks on floor for added comfort on walkways
- Sound hood for insulation , designed to reduce airborne noise
- Electrical sliding gates for user comfort and convenience
- Remote control for ease of use and access
- Corrosion protection

SERVICE & MAINTENANCE

Regular service and maintenance is recommended on your machine. Car Stackers Service Division offer periodical service and maintenance agreements.



IMPORTANT NOTES

Electrical installation

Prior assembly the customer must provide a lockable main control switch out of the system/pit close to the power unit. Electrical services to be provided by the customer to required specification.

Fire protection:

The customer must agree upon the fire protection requirements and the required measures with the local fire department.

EG-Machinery directive:

Our parking systems comply with the EG-Machinery directive and are CE certified according to DIN EN 14010:2003 and meet AS5124:2017
Safety of machinery - Equipment for power driven parking of motor vehicles - Safety and EMC requirements for design, manufacturing, erection and commissioning stages (EN 14010:2003, MOD)

Ramps' inclination:

Ramps leading to garages shall not have more than 15% inclination.

