



QUADROPARKER N4903

Our solution for high demands –
outdoor operation – no columns or
any other barrier in the area of the doors

Areas of application:

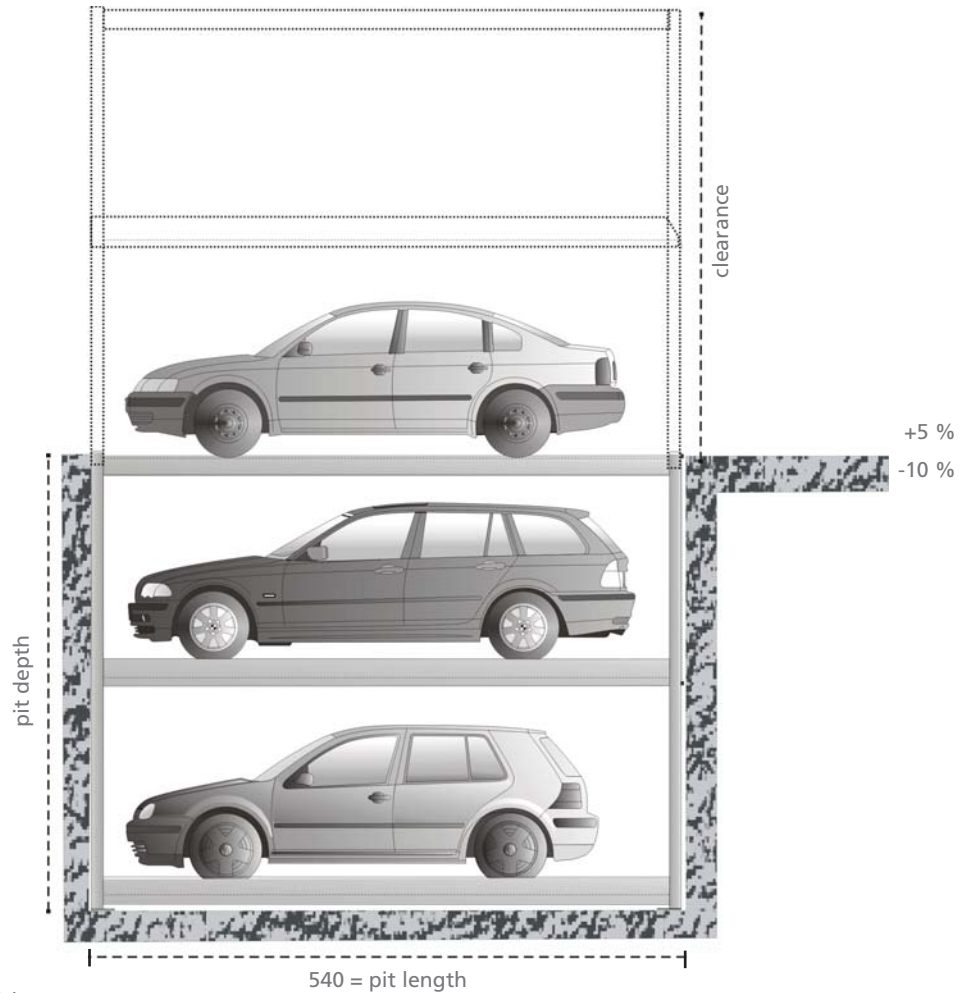
private houses, residential buildings, hotels, office buildings

For permanent use only!

All platforms are horizontally accessible

Load per platform
max. 2000 kg
(load per wheel
max. 500 kg)

Dimensions in cm.



Single installation for 3 vehicles

pit depth	pit length	clearance	car-height below	car-height middle	car-height above
350	540	510	150	150	> 170
370	540	530	160	160	> 170
390	540	550	170	170	> 170
420	540	580	180	190	> 170
440	540	600	190	200	> 170
460	540	620	200	210	> 170

Double installation for 6 vehicles

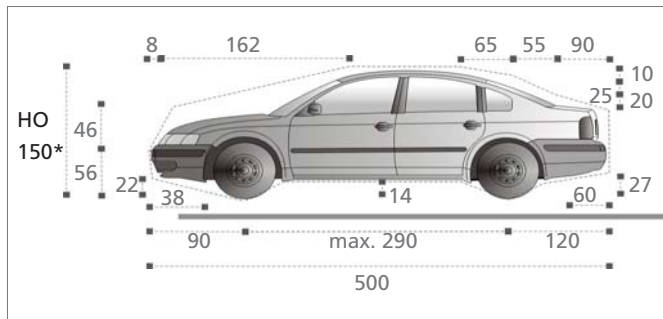
■ standard

pit depth	pit length	clearance	car-height below	car-height middle	car-height above
410	540	510	150	150	> 170
430	540	530	160	160	> 170
450	540	550	170	170	> 170
470	540	580	180	180	> 170
490	540	600	190	190	> 170
510	540	620	200	200	> 170

Width dimensions

All dimensions are minimum dimensions. All dimensions in cm. Tolerances to the German Norm VOB part C (DIN 18330, 18331) and DIN 18202 are to be considered.

Vehicle data

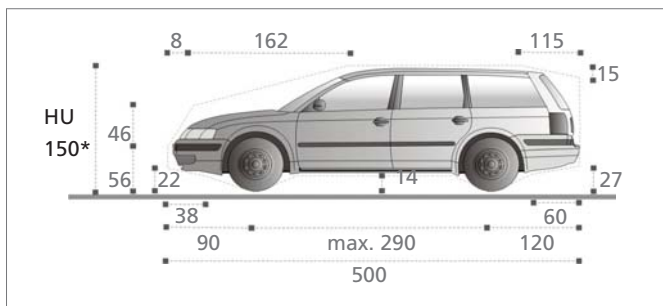


Standard

Car-length: max. 500cm, car-width 190cm,
Car-weight max. 2000kg, load per wheel max. 500kg

Optional

Car-length: max. 520cm, car-width 190cm,
Car-weight max. 2600kg, load per wheel max. 625kg



Note

Car-height HO* and HU*:
Alternative car-height, see table on page 2.
The total car height including roof rail and antenna
fixture must not exceed the mentioned max. height.

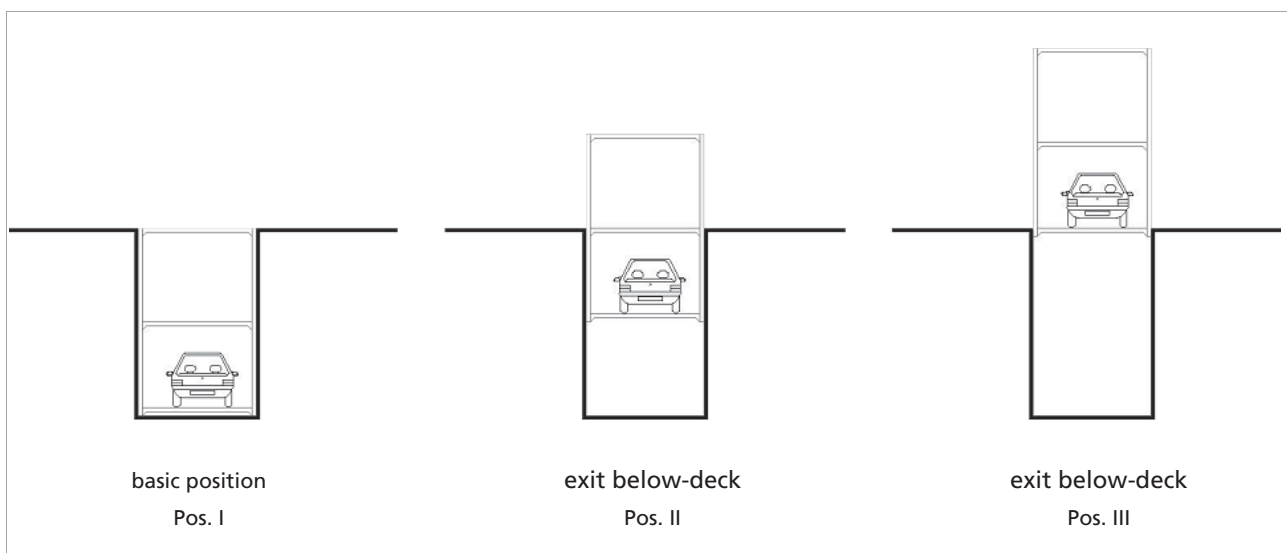
Width dimensions

Single installation for 3 cars			
width of parking space (cm)	230	240	250
total system width (cm)	265	275	285

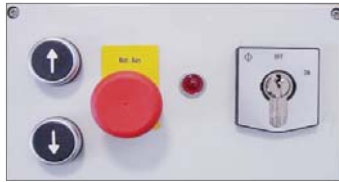
Double installation for 6 cars			
width of parking space (cm)	460	480	500
total system width (cm)	500	520	540

Dimensions do not include the dimensions of the hydraulic unit. Dimensions of the hydraulic unit and the switch cabinet shown in page 4 below, are to be considered in the planning.

Function model, fig. below: T3 S - 3 levels - single installation



Features in the scope of delivery



- button lifting
- button lowering
- emergency stop
- key switch with key interlock

Outdoor operation terminal
Interlocked key switch, removal
of the key only in the lower basic position.



Hydraulic unit

Hydraulic unit "Silencio" with tubing and wiring to the installation. The oil submerged motor "Silencio" is extremely quiet and smooth running. The motor-pump assembly is sound absorbent.

Positioning

- hydraulic unit placed directly on the lower platform, in the front left side, see picture above
- between or behind two systems in the pit on a 2m high support

Dimensions incl. standard switch cabinet

- 115cm x 25cm x 75cm

Scope of supply

S/D-Anlage with 3 platforms, 4 telescope columns with hydraulic cylinders and hydraulic block

Width of parking space

Width of parking space 230cm and pit depth 370cm as standard

Safety devices

- 2 command-cycle-systems assembled over cross as synchronizing device for safe operation even with unequal load distribution on the platform
- entering wedge for easy drive-in and parking
- locking device prevents lowering by pipe breakage or leakage
- fixation of the car parking systems and hydraulic unit with HD-anchors, wiring and impact dowels
- railings to avoid risk of falling onto the platform, insofar as necessary

Note: Safety guards against shearing and squeezing have priority and must be provided by the Buyer.

Protection against corrosion

- Corrosion protection version "Classic" of driving plates by continuous line-galvanizing to DIN EN 10142/10143.
- Corrosion protection version "Classic Plus" of driving plates by line-galvanizing to DIN EN 10142/10143 (depending on the market specific needs zinc and powder coated sheet metal included in the scope of supply).



Driving plates

Driving plates as trapezoidal sheet plates as standard, options see "Extra Equipment".

Extra Equipment



Driving plates

Alu-bulb-plate in the walking area even more user friendly when going and cruise the system.

Width of parking space

Width of parking space 240 cm and 250 cm is recommended for even more vehicle comfort

Vehicle weight

Optional vehicle weight: up to 2600 kg

Additional sound insulation

- structure-borne noise package to comply with DIN 4109 and adherence to sound insulation-measure R_w '57
- sound insulation hood to minimize airborne sound

Hydraulic

- HVLP 32-330 oil for high fluctuations in temperature



Catwalks

Positioning on the left side of the parking space even more comfortable, when walking to the driver's door. 1,5 mm zinc sheet, surface area coined. The catwalks are screwed to the driving plates, available with corrosion protection version "Classic" or "Classic Plus". Dimensions approx. 350 cm x 31/41 cm (L x W)

Protection against corrosion

- Corrosion protection version "Premium" of driving plates by individual piece-galvanizing to DIN ISO 1461
- Corrosion protection version "Premium Plus" of driving plates by individual piece-galvanizing to DIN ISO 1461 and coating of the top surfaces

Carport

A carport roofing which is fastened directly to the system can be delivered optionally. Details on request.

Tips

- We recommend a maintenance contract.
- Attendance and cleaning according to recommendations or in regular intervals.



Platform coating

Tub for upper platform as a condition for a platform layer as for example planting vegetation, gravel, etc.

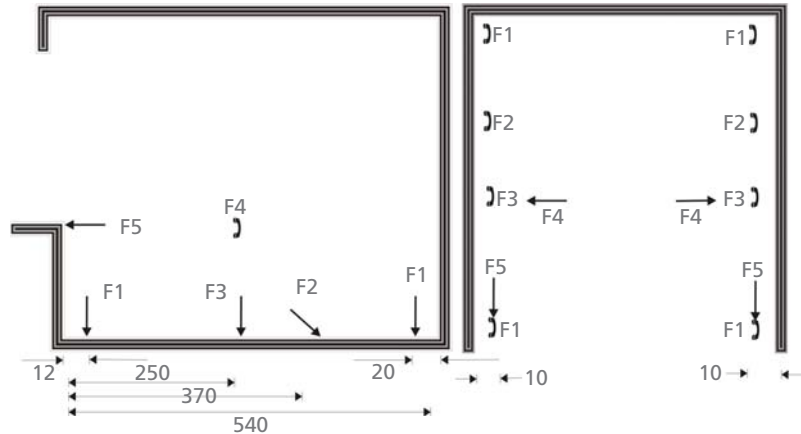
Interfaces to be performed by the Buyer

Foundation

Foundation works exactly to size, clean and dry is to be completed by the start of the installation. Bonded anchors for high foundation requirements shall be provided if necessary, available also as option.

Foundation plan

	single installation	double installation
F1	30 kN	55 kN
F2	0 kN	0 kN
F3	0 kN	0 kN
F4	+/- 1 kN	+/- 1 kN
F5	+/-10 kN	+/-10 kN



The pit must be executed in compliance with the designated forces. The forces and loads are transferred to the foundation by bearing plates with an area of 150 cm². The bearing plates are fixed with metal expansion anchors. The drill hole depth is approx. 14cm. All walls in the pit below the entrance level must be of concrete.

Electrical data

- supply line to main switch 5 x 4 mm² or according to local requirements, fuse protection 3 x 25 amp, slow
- lockable main switch, near to hydraulic unit but outside of the pit, completed at the beginning of installation, height approx. 180cm above entrance level (color requirements to EN 60204-1, 10.7.4, color red)
- hydraulic unit: 400V, 50Hz, threephase motor 6,0 kW
- electrical potential equalisation (foundation grounding steel-construction to VDE 0100 T410)

General costumers duties

- level surface (L x W) 50cm x 20cm to attach the control panel, close to the system, outside the operational platform area
- safeguarding according to DIN EN 294
- lighting according to DIN 67528, illumination of parking lots and buildings for parking
- at the edge of the pit a 10cm wide, yellow-black marking according to ISO 3864
- wall opening 10cm x 10cm for hydraulic and electrical lines in case of intermediate walls
- platform above: snowy loads, according to local regulations, must be taken into consideration
- compliance with installation requirements as per quotation

lockable main switch



safeguarding to DIN EN 294



marking pit edge



Function

Functional description

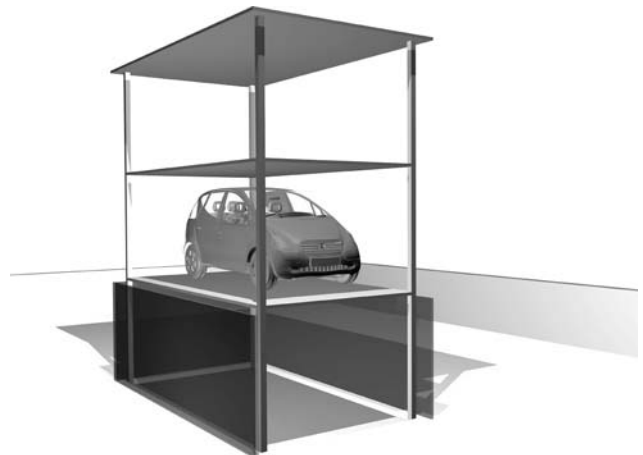
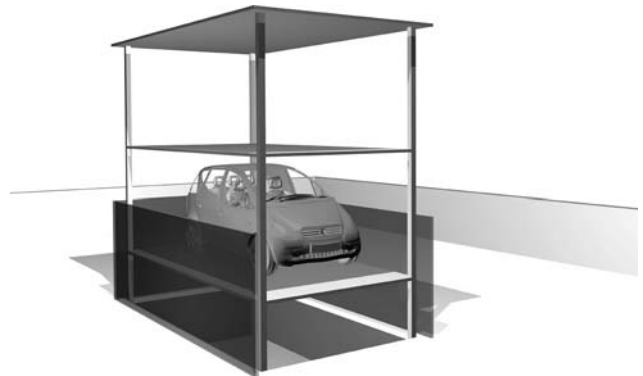
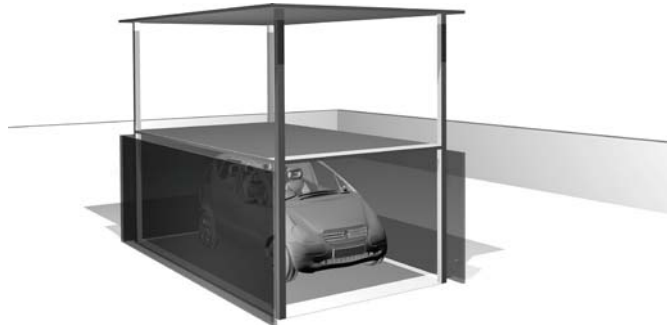
The upper platform is the basic position on area standard, the installation in lowered position.

For driving on the lower platforms the system is put and raised by means of keyswitches and "dead man control " into operation. Depending on the system can want to drive on the middle or lower platform now.

Leadership wedges coordinated with the car take care that the car be stopped in the right position and damages are excluded.

By pressing the keyswitch "lower" the installation is taken to starting position again. The key can be removed only now.

Being allowe to not hold back themselves any persons during the operation in the installation.



Electrical data

Installation diagram T3 E

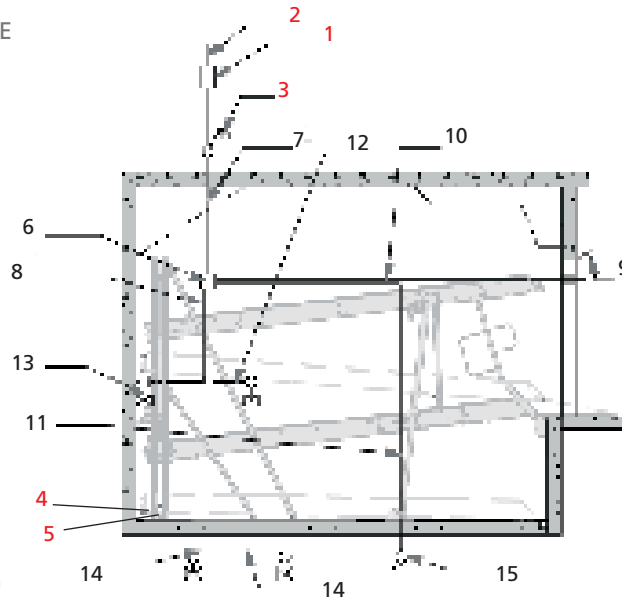


Figure: Car parking system with inclined accessible platforms. Specifications are also apply to systems with horizontal accessible platforms.

Item	Performance	Quantity	Designation	Positioning	Frequency
1	on site	1	fuse or automatic circuit 3 x 25 amp slow to DIN VDE 0100 part 430	in the feed cable	1x per hydr. unit
2	on site	1	supply line 5 G 4,0mm ² or according to local regulations	feed cable to main switch	1x per hydraulic unit
3	on site	1	lockable main switch	near hydraulic unit	1x per hydr. unit
4	on site	each 10 m	foundation earth connector	corner pit floor/ rear wall	
5	on site	1	potential equalisation to DIN EN 60204	from foundation earth connector to the system	1x per hydraulic unit
6	Nussbaum	1	hydraulic unit with three-phase motor 230/400volt, 50hz 6kW		
7	Nussbaum	1	supply line 5 G 4,0mm ² with marked wires and protective conductor	from main switch to hydraulic unit	1x per hydraulic unit
8	Nussbaum	1	control line 2x1		
9	Nussbaum	1	control element with emergency stop		
10	Nussbaum	1	control line 4G1		
11	Nussbaum	1	control line 4G1		
12	Nussbaum	1	control line 2x1		
13	Nussbaum	1	hydraulic valve lifting and lowering	by installation in ranks	
14	Nussbaum	1	hydraulic valve lifting and lowering		
15	Nussbaum	1	control element for each further system		

The items 6 – 15 are included in the scope of supply, unless otherwise specified in the offer/order.